



**Helix-50 Ltd**

# LED Lighting Project

Harris Academy

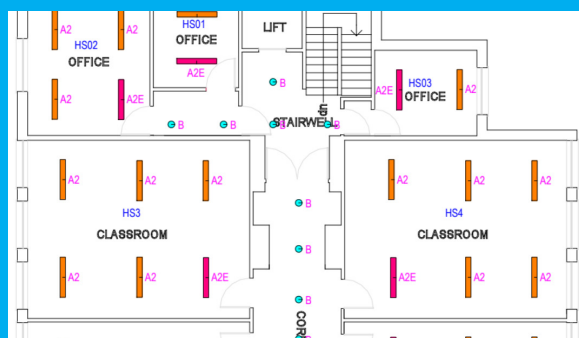
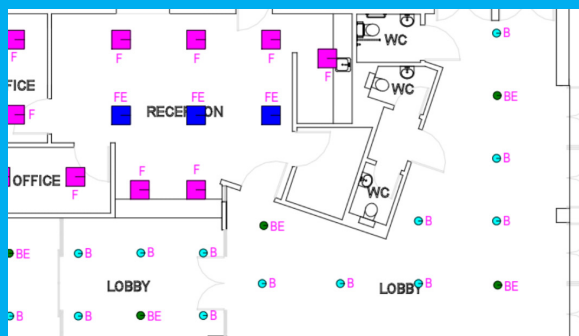
Peckham School, London



**Harris Academy  
Peckham**

**40%**

saved in energy cost for  
lighting



## The Aim

Harris Academy Peckham is a school in London who contacted us to try and reduce their energy consumption and their energy bill by replacing their lighting with more energy efficient luminaires.

## What we used

We mainly used Thorn's excellent Diffusalux LEDs to replace their fluorescent lighting, however, we also used Kosnic (a more economic option), as well as Contrac lighting who supplied luminaires for the sports hall.

## What we did & how we did it

From the get go, the school had zero "as fitted" lighting drawings for their current lighting, as a result of this, a full scale survey of all areas was carried out in order to determine the quantities and type of fittings required. With such a large quantity of luminaires to survey and such a vast campus space, this proved to be a complex task.

Return visits were made alongside the installation team to confirm certain areas and put a plan in place. Furthermore, we carried out several check plots to ensure the right lux levels would be achieved in classrooms and to confirm the wattage needed for the different ceiling heights.

Due to the existing install, there were a handful of complications to overcome in terms of physically fitting the new luminaires.

### Examples of these complications include:

a strange conduit and trunking spine coming down the middle of each classroom with "arms" branching off of each row of the trunking spine to suspend the luminaires. As well as encountering a ceiling height which really didn't lend itself to a suspended fitting install.

To get around these problem points, we surface mounted the new fittings to the ceiling/conduit boxes to create a cleaner look whilst still achieving the lux levels which we set out for. Inconveniently, the main stage of the install took place within school term.

Consequently, we scheduled the install to take place between 18:00 to 06:00 during the week as not to disrupt any lessons. On top of this, we worked weekends to complete the project in a timely manner. Going above and beyond, we also accommodated miscellaneous requests such as installing new switches in all classrooms in place of the old key switch arrangement they had which was causing issues for the staff.

## How the project aligned with its target

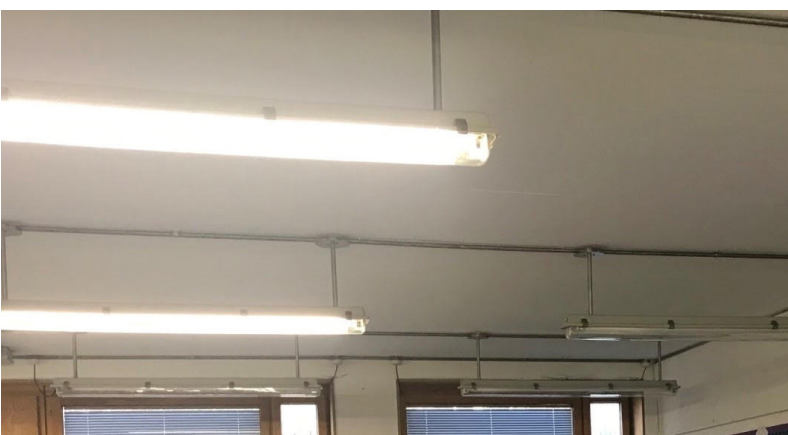
Harris Academy Federation embarked on a massive energy efficiency journey to reduce their energy bill and help the planet across several of their schools, Peckham Academy is a clear example of where this has taken place, lowering the wattages of fittings in the most highly populated areas has had a significant impact on their energy usage.

## What we have saved them

Some of the old fittings were kept on 24/7 as the controls were out of date, however, we removed these but the difference this makes isn't included in the figures mentioned below, so make sure to take into account that the figures provided are lower than what we were really able to them. With that said we managed a stunning reduction of circa 40% in the energy cost for lighting.

**Before**

**After**



**Greyfriars House, Sidings Court**

**Doncaster, DN4 5NU**

**Tel: 01302 439849**

**Email: [info@helix50.co.uk](mailto:info@helix50.co.uk)**